

2484 Natomas Park Drive Suite 100 Sacramento CA 95833
916 443 0335 lpasdesign.com Architecture + Design

FIDDYMENT RANCH APARTMENTS

Project Secondary Name

1900 BLUE OAKS BLVD
FOLSOM, CALIFORNIA 95747



ARCHITECT'S STAMP

APPROVAL

THIS DOCUMENT CONTAINS INFORMATION THAT IS PROPRIETARY TO LPAS, INC. AND IS FURNISHED FOR THE PURPOSES OF REVIEW, BIDDING OR CONSTRUCTION OF THE PROJECT LISTED IN THE JOB TITLE BOX ABOVE AND SHALL NOT BE USED FOR ANY OTHER PURPOSE OR RELEASED TO ANY OTHER PARTY WITHOUT THE WRITTEN CONSENT OF LPAS, INC. INFORMATION CONTAINED HEREIN IS AN INSTRUMENT OF PROFESSIONAL SERVICES AND SHALL REMAIN THE PROPERTY OF LPAS, INC. ALL RIGHTS RESERVED COPYRIGHT © 2009.

THIS DRAWING IS NOT FINAL OR TO BE USED FOR CONSTRUCTION UNTIL IT IS SIGNED BY THE ARCHITECT AND ENGINEER.

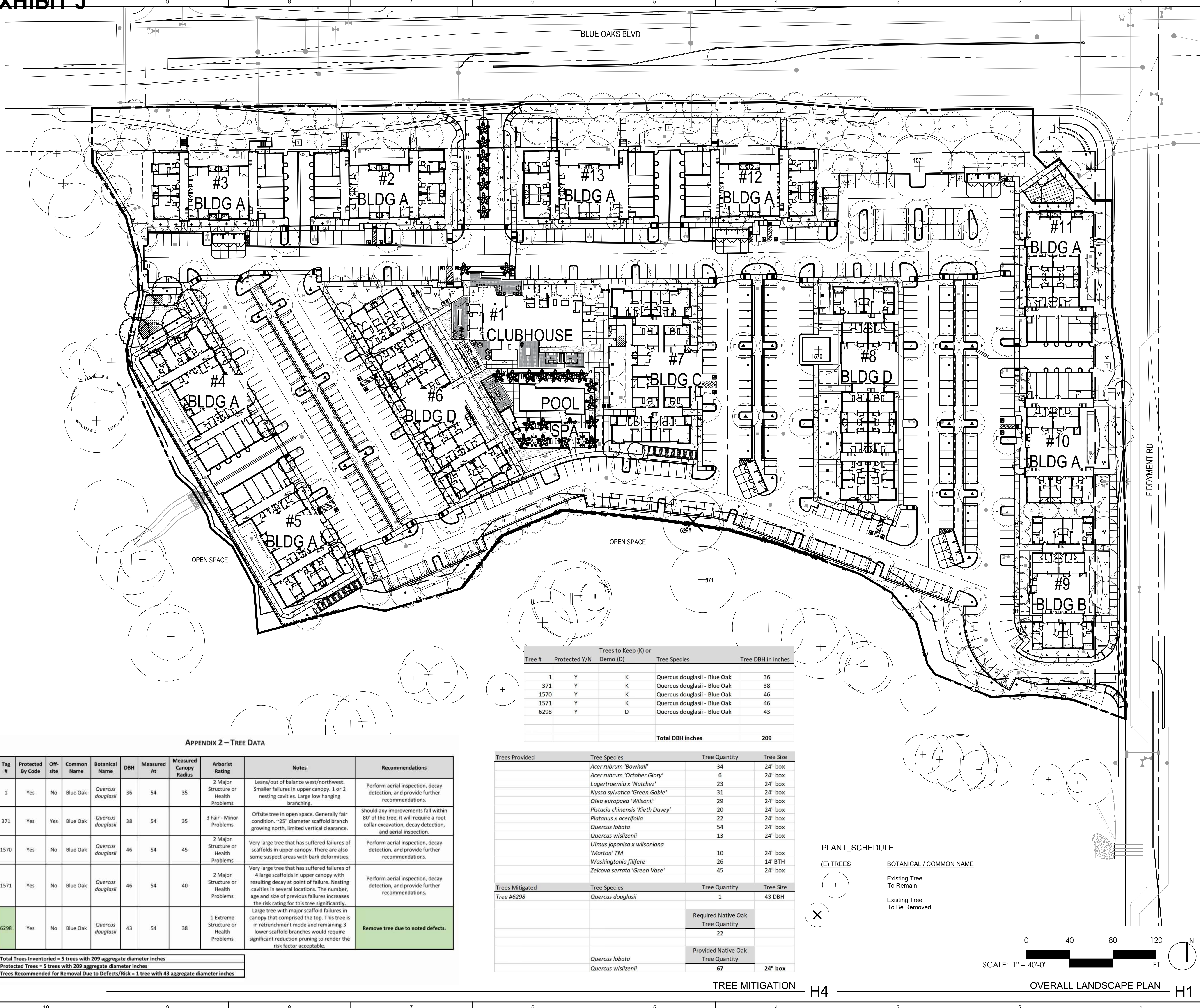
CONSULTANT

TREE MITIGATION PLAN

PROJECT NO: 1280-0003
DATE: 10-13-2021

SHEET NO:

L0.01



Trees to Keep (K) or Demo (D)				
Tree #	Protected Y/N	Demo (D)	Tree Species	Tree DBH in inches
1	Y	K	Quercus douglasii - Blue Oak	36
371	Y	K	Quercus douglasii - Blue Oak	38
1570	Y	K	Quercus douglasii - Blue Oak	46
1571	Y	K	Quercus douglasii - Blue Oak	46
6298	Y	D	Quercus douglasii - Blue Oak	43
Total DBH inches				209

APPENDIX 2 - TREE DATA

Tag #	Protected By Code	Off-site	Common Name	Botanical Name	DBH	Measured At	Measured Canopy Radius	Arborist Rating	Notes	Recommendations
1	Yes	No	Blue Oak	Quercus douglasii	36	54	35	2 Major Structure or Health Problems	Leans/out of balance west/northwest. Smaller failures in upper canopy. 1 or 2 nesting cavities. Large low hanging branching.	Perform aerial inspection, decay detection, and provide further recommendations.
371	Yes	Yes	Blue Oak	Quercus douglasii	38	54	35	3 Fair - Minor Problems	Offsite tree in open space. Generally fair condition. ~25" diameter scaffold branch growing north, limited vertical clearance.	Should any improvements fall within 80' of the tree, it will require a root collar excavation, decay detection, and aerial inspection.
1570	Yes	No	Blue Oak	Quercus douglasii	46	54	45	2 Major Structure or Health Problems	Very large tree that has suffered failures of scaffolds in upper canopy. There are also some suspect areas with bark deformities.	Perform aerial inspection, decay detection, and provide further recommendations.
1571	Yes	No	Blue Oak	Quercus douglasii	46	54	40	2 Major Structure or Health Problems	Very large tree that has suffered failures of 4 large scaffolds in upper canopy with resulting decay at point of failure. Nesting cavities in several locations. The number, age and size of previous failures increases the risk rating for this tree significantly.	Perform aerial inspection, decay detection, and provide further recommendations.
6298	Yes	No	Blue Oak	Quercus douglasii	43	54	38	1 Extreme Structure or Health Problems	Large tree with major scaffold failures in canopy that comprised the top. This tree is in retrenchment mode and remaining 3 lower scaffold branches would require significant reduction pruning to render the risk factor acceptable.	Remove tree due to noted defects.

Total Trees Inventoried = 5 trees with 209 aggregate diameter inches
Protected Trees = 5 trees with 209 aggregate diameter inches
Trees Recommended for Removal Due to Defects/Risk = 1 tree with 43 aggregate diameter inches

Trees Provided	Tree Species	Tree Quantity	Tree Size
	Acer rubrum 'Bowhall'	34	24" box
	Acer rubrum 'October Glory'	6	24" box
	Lagerstroemia x 'Natchez'	23	24" box
	Nyssa sylvatica 'Green Gable'	31	24" box
	Olea europaea 'Wilsonii'	29	24" box
	Pistacia chinensis 'Kieth Davey'	20	24" box
	Platanus x acerifolia	22	24" box
	Quercus lobata	54	24" box
	Quercus wislizenii	13	24" box
	Ulmus japonica x wilsoniana 'Morton' TM	10	24" box
	Washingtonia filifera	26	14" BTH
	Zelcova serrata 'Green Vase'	45	24" box
Trees Mitigated	Tree Species	Tree Quantity	Tree Size
Tree #6298	Quercus douglasii	1	43 DBH
	Required Native Oak Tree Quantity	22	
	Provided Native Oak Tree Quantity	67	24" box

PLANT SCHEDULE

- (E) TREES
- BOTANICAL / COMMON NAME
- Existing Tree To Remain
- Existing Tree To Be Removed



TREE MITIGATION

OVERALL LANDSCAPE PLAN

H4

H1